

ROTODYNE

TYPE
HGP-SS

FOR HANDLING CORROSIVE, HYGIENIC, ABRASIVE CHEMICALS & VISCIOUS LIQUID

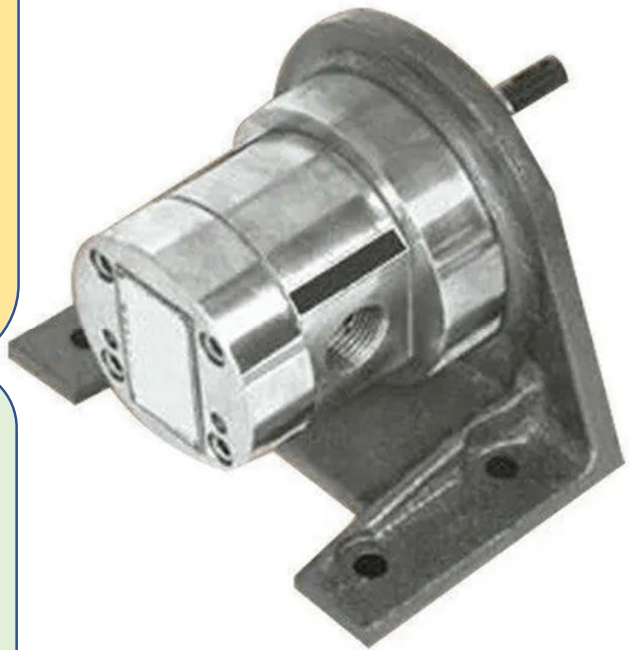
SS ROTARY GEAR PUMPS

ADVANTAGES:

- ❖ COMPLETE SS-316 M.O.C
- ❖ NITRIDE GEARS & SHAFT FOR LONGER LIFE
- ❖ PTFE COATED DU BUSH FOR SMOOTH PERFORMANCE
- ❖ ZERO LEAKAGE PTFE TYPE Z-PACK SEALANT IN GLAND
- ❖ COMPACT & SIMPLE IN DESIGN, HIGH IN EFFICIENCY

APPLICATIONS:

- FOOD & BEVERAGES INDUSTRIES
- DAIRY INDUSTRIES
- PHARMACEUTICAL INDUSTRIES
- PAINT & COLOR INDUSTRIES
- CHEMICAL & TEXTILE INDUSTRIES



“ROTODYNE” BRAND HGP SS SERIES EXTERNAL GEAR PUMPS ARE SELF PRIMING

BI-DIRECTIONAL, POSITIVE DISPLACEMENT ROTARY PUMP IN ALL STAINLESS STEEL (SS-316) CONSTRUCTION WITH DRY LUBRICATING PTFE COATED DU BUSH BEARINGS. THESE PUMPS ARE EASY CLEANABLE, EASY MAINTAINABLE IN 3-PIECE CONSTRUCTION. THE BACK COVER CAN SIMPLY BE REMOVED BY 4-DOM NUT. THE RT ANGLE MOUNTING BRACKETS FACILITY FOOT MOUNTING OF THE PUMP ON BASE PLATE WITH ELECTRIC MOTOR OF APPROPRIATE RATING.

ROTODYNE PUMPS & SYSTEMS (AHMEDABAD, INDIA).

ROTODYNE

SS ROTARY GEAR PUMPS

MATERIAL OF CONSTRUCTION

PUMP BODY	CF8M (SS-316)	GEARS	SS-316 HELICAL	DOM NUT / LN BOLT	SS-304
FRONT COVER	CF8M (SS-316)	SHAFT	SS-316	SEALING	"Z" PACK TEFLON
BACK COVER	CF8M (SS-316)	BUSH BEARINGS	TEFLON COATED "DU"	PACKING / GASKET	TEFLON SHEET
SEAL COVER	CF8M (SS-316)	MOUNTING BRACKET	C.I. GR. 20 IS 210	KEY FOR COUPLING	SS-410

SPECIAL NOTES:

FOER CALCULATING THE POWER REQUIREMENT AT DUTY POINT, MULTIPLY THE DUTY POINT PRESSURE WITH UNIT HORSE POWER & ADD NO LOAD VISCOUS POWER OF APPROPRIATE VISCOSITY. PROVIDE SAFETY MARGIN BEFORE FIXING THE RATING OF THE PRI-MOVER. FOR HIGHER VISCOSITY FURTHER MARGIN MAY BE KEPT OR THE MANUFACTURER MAY BE CONSULTED. ALL SIZES OF HGP-SS PUMPS ARE DESIGNED TO RUN AT 1440 RPM UP TO VISCOSITY OF 500 CST., FOR SMALL SIZE PUMP UP TO 1" CAN BE SAFELY RUN AT 1440 RPM EVEN AT HIGHER VISCOSITY UP 1000 CST WITH ADDITIONAL HORSE POWER. FOR SIZES ABOVE 1" REDUCE THE SPEED TO 960 RPM FOR VISCOSITY UP TO 1000 CST. FOR HIGHER VISCOUS CONSULT THE MANUFACTURER TO AVOID CAVITATION & OVER LOADING PROBLEM.

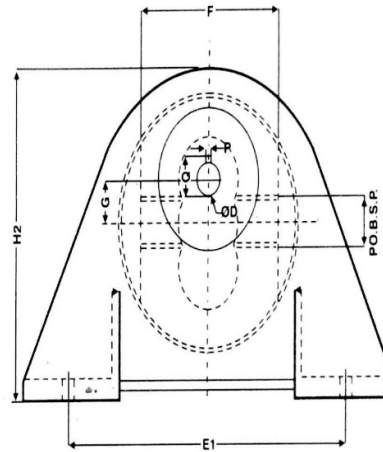
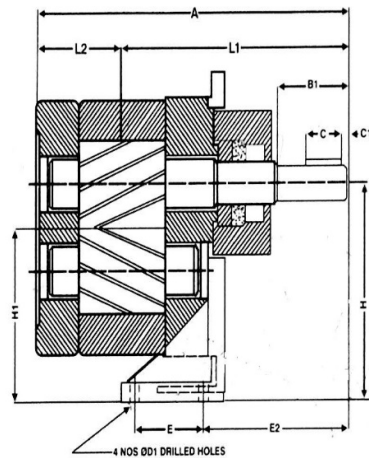
USES:

THIS COMPACT & EFFICIENT SS PUMPS FIND VARIOUS APPLICATION FOR HANDLING VISCOUS FOOD PRODUCTS LIKE GHEE, BUTTER, FRUIT PULP, VEGETABLE SOUSE, KANJI ETC. THEY ARE ALSO USED IN PHARMACEUTICAL INDUSTRIES FOR HANDLING SUGAR SOLUTION, GLYCERINE, GLYCOL ETC. IN CHEMICAL INDUSTRIES CORROSIVE VISCOUS CHEMICALS ARE EASILY HANDLED WITH THIS PUMP MOST EFFECITVELY.

ROTODYNE

TYPE
HGP-SS

DIMENSION



SIZE	A	B1	C	C1	D	D1	E	E1	E2	F	G	H	H1	H2	L1	L2	P	Q	PQ.B.S.P.
050	144	30	18	3	12	7.8	50	120	71	75	14	71	54	110	99	45	4	13.6	1/2"x 1/2"
100	183	35	25	3	15	10.5	45	140	94	86	17	90	74	140	126	57	5	17	1"x 1"
150	235	38	30	3	20	11.5	50	153	111	98	22	100	77	150	160	75	6	22.5	1.1/2"x 1.1/2"
200	270	42	30	3	24	12.5	70	190	110	110	25	112	85	170	180	90	8	27	2"x 2"

ROTODYNE PUMPS & SYSTEMS (AHMEDABAD, INDIA).